

Weather and Dustproof Projector for Rugged Environments

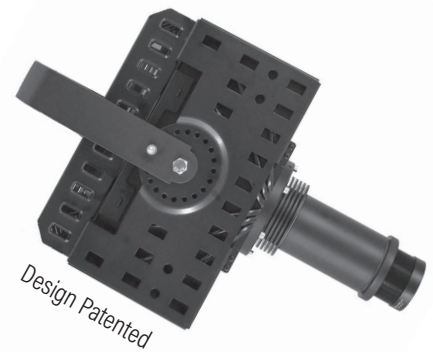
Passive cooling - no moving parts such as fans or motors

Applications - for dusty and wet industrial environments

UL/cUL Certified - for wet and dusty environments

Interchangeable

Projection Lenses - for a wide range of projection distance and size



SPECIFICATIONS

Order Code: PSB150PCE
Power Suply: 100-277V, 50/60Hz, 220W
Temp Rating: -22°F to 140°F (-30°C to 60°C)
Environment: Dusty and wet industrial environments

Lamp Type: LED - 150 Watt
LED Power Range: Field Adjustable, 60W to 150W (see application notes)
Rated LED Lifespan: 25,000 hours to 60,000 hours depending on power setting
LED Color Temp: 6,000k +/- 500k
Luminous Flux: 12,000lm (effective flux 8,900lm)

Projection Lenses: Narrow: f=290mm/10°
 Semi-Narrow: f=210mm/13°
 Medium: f=140mm/20°
 Semi-Wide: f=115mm/25°
 Wide: f=92mm/30°
 Extra-Wide: f=56mm/40° - Please Note: 44mm Max ID for this lens

Gobo Size: M-Size - Outside Diameter: 66mm, Image Diameter: 48mm
 (ID=44mm for extra-wide lens)

Gobo Types: Glass or Metal Gobos only, no Film Gobos

Projection Range

Bright Environment: - Up to 70 feet
Dim Environment: - Up to 150 feet
Dark Environment: - Up to 300 feet

Safety Standards: UL 48 Standard for Electric Signs,
 CSA C22.2 No. 207-15 Standard for Portable
 and Stationary Electric Signs and Displays.
UL Certificate Number: E493665 Rated for Wet Environments



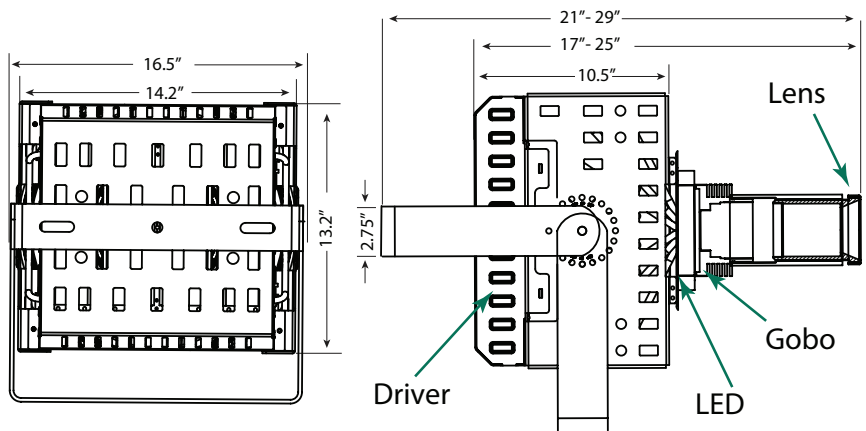
ECO Spot™ B150PCE LED Gobo Projector - Spec Sheet

Dimensions

Projector Body: 13.2" x 14.2" x 10.5"
 Projector Weight: 23lbs

Total Length

Including Projection Lens: - 21"
 With Longest Lens (Narrow) - 29"

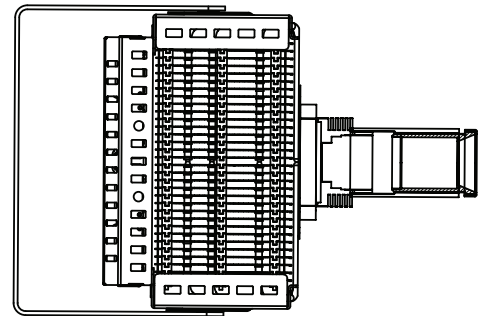


Shipping Dimensions

Box Size: 19" x 19" x 17"
 Box Weight: 33lbs

Product Warranty

Two year repair/replacement warranty for PCE Models



PRO Spot™ Photometrics																						
Model	Gobo Size	Gobo max ID	Projection Lens	Effective Lumens	Beam Multi.	Foot candles	PROJECTION DISTANCE IN FEET (FT)															
							3	5	8	10	15	20	25	30	35	40	50	75	100	150	200	300
PSB150	50mm	209mm (13°)	6877	0.23	165600	Size (ft)	0.7	1.2	1.8	2.3	3.5	4.6	5.8	6.9	8.1	9.2	11.5	17.3	23.0	34.5	46.0	69.0
						Brightn.(fc)				1656.0	736.0	414.0	265.0	184.0	135.2	103.5	66.2	29.4	16.6	7.4	4.1	1.8
PSB150E	50mm	140mm (20°)	9693	0.35	100800	Size (ft)	1.1	1.8	2.8	3.5	5.3	7.0	8.8	10.5	12.3	14.0	17.5	26.3	35.0	52.5	70.0	105.0
						Brightn.(fc)			1575.0	1008.0	448.0	252.0	161.3	112.0	82.3	63.0	40.3	17.9	10.1	4.5	2.5	1.1
PSB150CE	50mm	115mm (25°)	8845	0.42	64800	Size (ft)	1.3	2.1	3.4	4.2	6.3	8.4	10.5	12.6	14.7	16.8	21.0	31.5	42.0	63.0	84.0	126.0
						Brightn.(fc)			1012.5	648.0	288.0	162.0	103.7	72.0	52.9	40.5	25.9	11.5	6.5	2.9	1.6	
M-Size OD=66mm ID=48mm	48mm	92mm (30°)	8206	0.55	34560	Size (ft)	1.7	2.8	4.4	5.5	8.3	11.0	13.8	16.5	19.3	22.0	27.5	41.3	55.0	82.5	110.0	165.0
						Brightn.(fc)		1382.4	540.0	345.6	153.6	86.4	55.3	38.4	28.2	21.6	13.8	6.1	3.5	1.5		
recom.	44mm	56mm** (40°)	7221	0.82	13680	Size (ft)	2.5	4.1	6.6	8.2	12.3	16.4	20.5	24.6	28.7	32.8	41.0	61.5	82.0	123.0	164.0	246.0
						Brightn.(fc)	1520.0	547.2	213.8	136.8	60.8	34.2	21.9	15.2	11.2	8.6	5.5	2.4	1.4			
Foot Candles (FT)	For a quick overview, the illumination values in the tables are color coded. There are many factors that determine the visibility of a projection, such as ambient light, color and reflectiveness of the projection surface, competing light, gobo colors, projector color temperature, and other factors. Therefore our recommendations should only be used as guidelines and we cannot guarantee a successful application. If you are unsure, please call us to discuss.																					
Projection Size Calculation	Projection Size = Distance x Beam Mult. Distance = Projection Size / Beam Mult.						For the resulting Projection Size at any given Distance, Multiply the number in the "Beam Mult." column with your Projection Distance. For the Distance needed to achieve a desired Projection Size, Divide the Projection size by the Beam Multiplier.															
300+	Extreme brightness for extremely bright environments, i.e. bright areas, additionally flooded with daylight, such as Lobby-, Retail-, Trade Show-, Environment. Outdoors (shady, no direct sunlight).																					
150-300	Very high brightness for very bright environments, such as light flooded Office-, Lobby-, Retail-, Trade Show-, Environment. Color gobos project in vibrant colors. Outdoors well visible at night with vibrant colors.																					
45-150	The most common brightness bracket for bright environments, such as Office, Lobby, Retail, Tradeshow. Outdoors extremely bright at night. Color gobos project well.																					
15-45	Sufficient brightness for environments, such as Bars, Clubs, and intimate Restaurants, Theaters, and dimmed Conference rooms. Outdoors well visible at night. Color gobos should preferably be used with lighter colors and the projection surface should be light and somewhat reflective.																					
2-15	Only advisable for dark environments and subtle projection of light colored artwork, preferably on light, reflective projection surface. If all conditions are met, the max. listed image distance/size can be doubled in most cases.																					

For Metric Conversion: For Meters, Multiply Feet by .305 / For LUX Multiply Footcandles by 10.76

Package Contents

Projector | Mounting Yokes | Lens Tube | Projection Lens | Test Gobo | User Manual