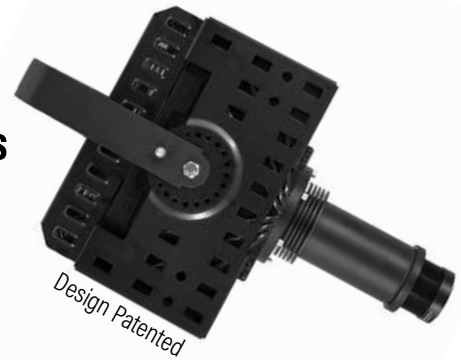


## Weather and Dustproof Projector for Rugged Environments

- Passive cooling** - no moving parts such as fans or motors
- Applications** - for dusty and wet industrial environments
- UL/cUL Certified** - for wet and dusty environments
- Interchangeable Projection Lenses** - for a wide range of projection distance and size



### SPECIFICATIONS

**Order Code:** PSB90PCE  
**Power Suply:** 100-277V, 50/60Hz, 120W  
**Temp Rating:** -22°F to 140°F (-30°C to 60°C)  
**Environment:** Dusty and wet industrial environments

**Lamp Type:** LED - 90 Watt  
**LED Power Range:** Field Adjustable, 60W to 90W (see application notes)  
**Rated LED Lifespan:** 25,000 hours to 60,000 hours depending on power setting  
**LED Color Temp:** 6,000k +/- 500k  
**Luminous Flux:** 7,200lm (effective flux 6,300lm)

**Projection Lenses:** Narrow: f=290mm/10°  
 Semi-Narrow: f=210mm/13°  
 Medium: f=140mm/20°  
 Semi-Wide: f=115mm/25°  
 Wide: f=92mm/30° - please note, lens has max Gobo ID of 42mm  
 Ultra-Wide: f=56mm/40° - please note, lens has max Gobo ID of 42mm

**Gobo Size:** M-Size - Outside Diameter: 66mm, Image Diameter: 48mm  
 (ID=42mm for wide and Ultra-Wide lens)

**Gobo Types:** Glass or Metal Gobos only, no Film Gobos

**Projection Range**

**Bright Environment:** - Up to 50 feet  
**Dim Environment:** - Up to 100 feet  
**Dark Environment:** - Up to 250 feet

**Safety Standards:** UL 48 Standard for Electric Signs, CSA C22.2 No. 207-15 Standard for Portable and Stationary Electric Signs and Displays.  
**UL Certificate Number:** E493665 Rated for Wet Environments

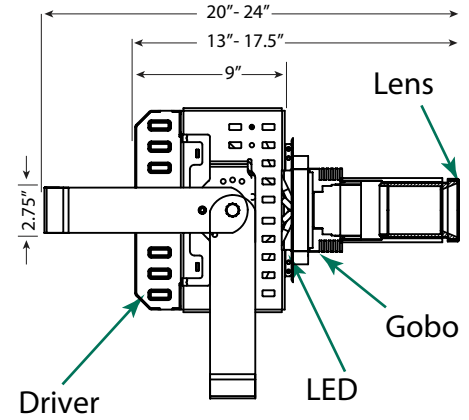
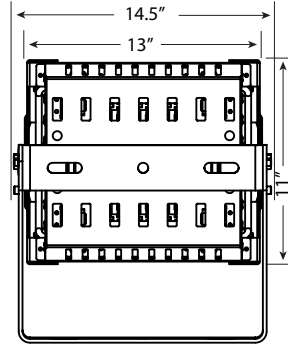


## Dimensions

Projector Body: 11" x 13" x 9"  
 Projector Weight: 16lbs

## Total Length

- with Narrow Lens: - 19.5"
- with Semi-Narrow Lens: - 17.5"
- with Medium or Wide Lens: - 13"
- with Semi-Wide: - 15.5"

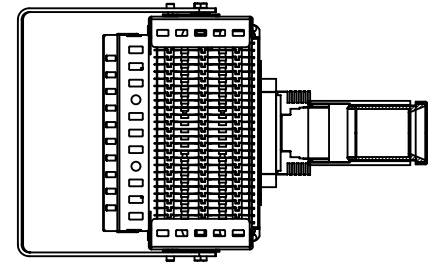


## Shipping Dimensions

Box Size: 17" x 17" x 17"  
 Box Weight: 24lbs

## Product Warranty

Two year repair/replacement warranty for PCE Models



PRO Spot™ Photometrics																							
Model	Gobo Size	Gobo max ID	Projection Lens	Effective Lumens	Beam Multi.	Foot candles	PROJECTION DISTANCE IN FEET (FT)																
							3	5	8	10	15	20	25	30	35	40	50	75	100	150	200	300	
PSB90	52mm	209mm (13°)	5262	0.23	126720	Size (ft)	0.7	1.2	1.8	2.3	3.5	4.6	5.8	6.9	8.1	9.2	11.5	17.3	23.0	34.5	46.0	69.0	
						Brightn. (fc)			1980.0	1267.2	563.2	316.8	202.8	140.8	103.4	79.2	50.7	22.5	12.7	5.6	3.2	1.4	
PSB90E	52mm	140mm (20°)	6300	0.35	65520	Size (ft)	1.1	1.8	2.8	3.5	5.3	7.0	8.8	10.5	12.3	14.0	17.5	26.3	35.0	52.5	70.0	105.0	
						Brightn. (fc)			1023.8	655.2	291.2	163.8	104.8	72.8	53.5	41.0	26.2	11.6	6.6	2.9	1.6		
PSB90C	52mm	115mm (25°)	5700	0.42	41760	Size (ft)	1.3	2.1	3.4	4.2	6.3	8.4	10.5	12.6	14.7	16.8	21.0	31.5	42.0	63.0	84.0	126.0	
						Brightn. (fc)			1670.4	652.5	417.6	185.6	104.4	66.8	46.4	34.1	26.1	16.7	7.4	4.2	1.9	1.0	
PSB90PCE	M-Size OD=66mm ID=48mm	48mm	92mm (30°)	4445	0.55	18720	Size (ft)	1.7	2.8	4.4	5.5	8.3	11.0	13.8	16.5	19.3	22.0	27.5	41.3	55.0	82.5	110.0	165.0
							Brightn. (fc)			748.8	292.5	187.2	83.2	46.8	30.0	20.8	15.3	11.7	7.5	3.3	1.9		
		44mm recom.	56mm** (40°)	3572	0.82	6768	Size (ft)	2.5	4.1	6.6	8.2	12.3	16.4	20.5	24.6	28.7	32.8	41.0	61.5	82.0	123.0	164.0	246.0
							Brightn. (fc)			752.0	270.7	105.8	67.7	30.1	16.9	10.8	7.5	5.5	4.2	2.7	1.2		

Foot Candles (FT) For a quick overview, the illumination values in the tables are color coded. There are many factors that determine the visibility of a projection, such as ambient light, color and reflectiveness of the projection surface, competing light, gobo colors, projector color temperature, and other factors. Therefore our recommendations should only be used as guidelines and we cannot guarantee a successful application. If you are unsure, please call us to discuss.

Projection Size Calculation Projection Size = Distance x Beam Mult. For the resulting Projection Size at any given Distance, Multiply the number in the "Beam Mult." column with your Projection Distance. For the Distance needed to achieve a desired Projection Size, Divide the Projection size by the Beam Multiplier.

300+ Extreme brightness for extremely bright environments, i.e. bright areas, additionally flooded with daylight, such as Lobby-, Retail-, Trade Show-, Environment. Outdoors (shady, no direct sunlight).

150-300 Very high brightness for very bright environments, such as light flooded Office-, Lobby-, Retail-, Trade Show-, Environment. Color gobos project in vibrant colors. Outdoors well visible at night with vibrant colors.

45-150 The most common brightness bracket for bright environments, such as Office, Lobby, Retail, Tradeshow. Outdoors extremely bright at night. Color gobos project well.

15-45 Sufficient brightness for environments, such as Bars, Clubs, and intimate Restaurants, Theaters, and dimmed Conference rooms. Outdoors well visible at night. Color gobos should preferably be used with lighter colors and the projection surface should be light and somewhat reflective.

2-15 Only advisable for dark environments and subtle projection of light colored artwork, preferably on light, reflective projection surface. If all conditions are met, the max. listed image distance/size can be doubled in most cases.

For Metric Conversion: For Meters, Multiply Feet by .305 / For LUX Multiply Footcandles by 10.76

## Package Contents

Projector | Mounting Yokes | Lens Tube | Projection Lens | Test Gobo | User Manual