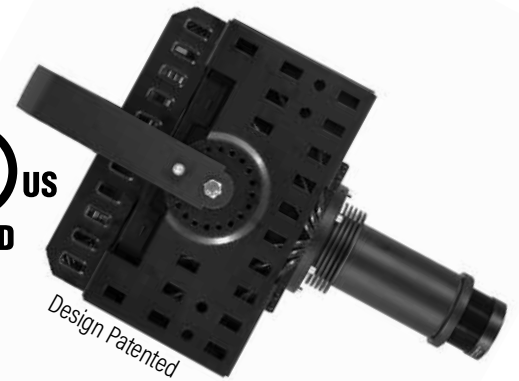


## Weather and Dustproof Projector for Rugged Environments

- Passive cooling** - no moving parts such as fans or motors
- Applications** - for bright environments, large projection sizes and long distance projections
- UL/cUL Certified** - for wet and dusty environments
- Interchangeable Projection Lenses** - for a wide range of projection distances and sizes



*Design Patented*

### SPECIFICATIONS

**Order Code:** PSC60PCE  
**Power Suply:** 100-277V, 50/60Hz, 70W  
**Temp Rating:** -22°F to 140°F (-30°C to 60°C)  
**Environment:** Rugged, dusty, wet environments

**Lamp Type:** LED - 60 Watt  
**Rated LED Lifespan:** 30,000 hours depending on power setting  
**LED Color Temp:** 6,000k +/- 500k  
**Luminous Flux:** 4,000lm (effective flux 2,400lm)

**Projection Lenses:** Narrow: f=140mm/10°  
 Semi-Narrow: f=100mm/15°  
 Semi-Wide: f=70mm/20°  
 Wide: f=56mm/25°  
 Ultra-Wide: f=28mm/45° - please note, lens has max Gobo ID of 23mm

**Gobo Size:** E-Size - Outside Diameter: 37.5mm, Image Diameter: 25mm  
 (ID=23mm for ultra-wide lens)

**Gobo Types:** Glass or Metal Gobos only, no Film Gobos

### Projection Range

**Bright Environment:** - Up to 50 feet  
**Dim Environment:** - Up to 90 feet  
**Dark Environment:** - Up to 180 feet (very dark conditions)

**Safety Standards:** UL 48 Standard for Electric Signs, CSA C22.2 No. 207-15 Standard for Portable and Stationary Electric Signs and Displays.  
**UL Certificate Number:** E493665 Rated for Wet Environments



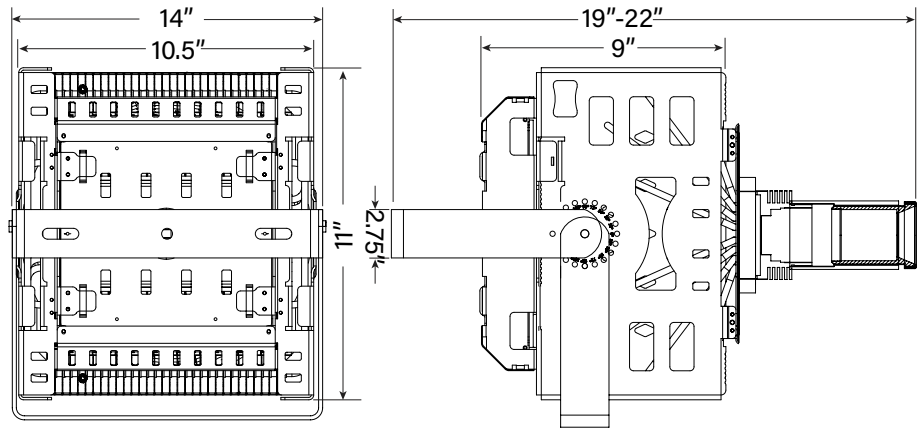
## Dimensions

Projector Body: 11" x 10.5" x 9"

Projector Weight: 14lbs

## Total Length Including Projection Lens

f=140mm/10° -	18"
f=100mm/15° -	17"
f=70mm/20° -	15"
f=56mm/20° -	15"
f=28mm/45° -	16.5"



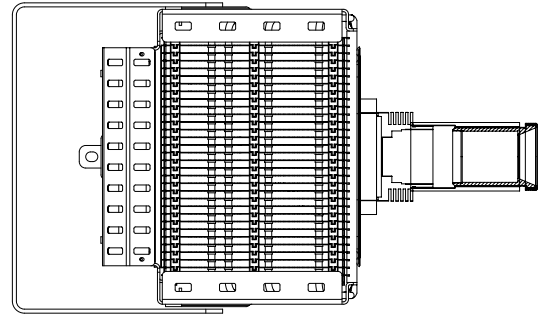
## Shipping Dimensions

Box Size: 17" x 17" x 17"

Box Weight: 19lbs

## Product Warranty

Two year repair/replacement warranty for PCE Models



Photometrics																									
Model	Gobo Gobo Size	Projection Lens	Effective Lumens	Beam Multi.	Foot candles		PROJECTION DISTANCE IN FEET (FT)																		
							3	5	8	10	15	20	25	30	35	40	50	75	100	150	200	300			
PSC60	PSC60E	140mm (10°)	1483	0.18	58320	Size (ft)	0.5	0.9	1.4	1.8	2.7	3.6	4.5	5.4	6.3	7.2	9.0	13.5	18.0	27.0	36.0	54.0			
						Brightn. (fc)			911.3	583.2	259.2	145.8	93.3	64.8	47.6	36.5	23.3	10.4	5.8	2.6	1.5				
PSC60+	PSC60PCE	100mm (15°)	2560	0.26	48240	Size (ft)	0.8	1.3	2.1	2.6	3.9	5.2	6.5	7.8	9.1	10.4	13.0	19.5	26.0	39.0	52.0	78.0			
						Brightn. (fc)		1929.6	753.8	482.4	214.4	120.6	77.2	53.6	39.4	30.2	19.3	8.6	4.8	2.1	1.2				
E-Size	OD=37.5mm	ID=25mm	2008	0.35	20880	Size (ft)	1.1	1.8	2.8	3.5	5.3	7.0	8.8	10.5	12.3	14.0	17.5	26.3	35.0	52.5	70.0	105.0			
						Brightn. (fc)		835.2	326.3	208.8	92.8	52.2	33.4	23.2	17.0	13.1	8.4	3.7	2.1						
						Size (ft)	1.4	2.3	3.6	4.5	6.8	9.0	11.3	13.5	15.8	18.0	22.5	33.8	45.0	67.5	90.0	135.0			
						Brightn. (fc)	1600.0	576.0	225.0	144.0	64.0	36.0	23.0	16.0	11.8	9.0	5.8	2.6	1.4						
		28mm (40°)	2777	0.85	4896	Size (ft)	2.6	4.3	6.8	8.5	12.8	17.0	21.3	25.5	29.8	34.0	42.5	63.8	85.0	127.5	170.0	255.0			
						Brightn. (fc)	544.0	195.8	76.5	49.0	21.8	12.2	7.8	5.4	4.0	3.1	2.0								

Foot Candles (FT) For a quick overview, the illumination values in the tables are color coded. There are many factors that determine the visibility of a projection, such as ambient light, color and reflectiveness of the projection surface, competing light, gobo colors, projector color temperature, and other factors. Therefore our recommendations should only be used as guidelines and we cannot guarantee a successful application. If you are unsure, please call us to discuss.

Projection Size Calculation Projection Size = Distance x Beam Mult. Distance = Projection Size / Beam Mult. For the resulting Projection Size at any given Distance, Multiply the number in the "Beam Mult." column with your Projection Distance. For the Distance needed to achieve a desired Projection Size, Divide the Projection size by the Beam Multiplier.

300+	Extreme brightness for extremely bright environments, i.e. bright areas, additionally flooded with daylight, such as Lobby-, Retail-, Trade Show-, Environment. Outdoors (shady, no direct sunlight).
150-300	Very high brightness for very bright environments, such as light flooded Office-, Lobby-, Retail-, Trade Show-, Environment. Color gobos project in vibrant colors. Outdoors well visible at night with vibrant colors.
45-150	The most common brightness bracket for bright environments, such as Office, Lobby, Retail, Tradeshow. Outdoors extremely bright at night. Color gobos project well.
15-45	Sufficient brightness for environments, such as Bars, Clubs, and intimate Restaurants, Theaters, and dimmed Conference rooms. Outdoors well visible at night. Color gobos should preferably be used with lighter colors and the projection surface should be light and somewhat reflective.
2-15	Only advisable for dark environments and subtle projection of light colored artwork, preferably on light, reflective projection surface. If all conditions are met, the max. listed image distance/size can be doubled in most cases.

For Metric Conversion: For Meters, Multiply Feet by .305 / For LUX Multiply Footcandles by 10.76

## Package Contents

Projector | Mounting Yokes | Lens Tube | Projection Lens | Test Gobo | User Manual